

Chase Cover Specification Pricing Worksheet

Company: _____ **PO:** _____

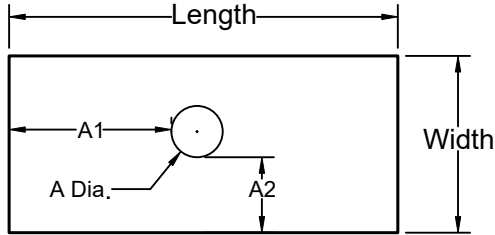
DATE: _____

Customer Name: _____

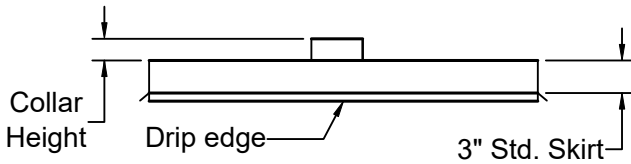
Order # _____

No Hole Single Hole Centered

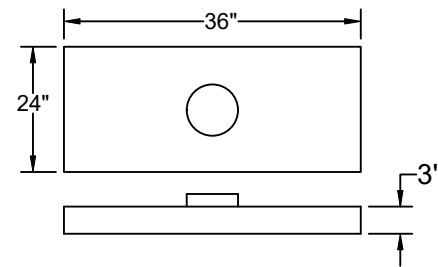
MATERIAL:



- 24 Ga. Stainless Multiplier : (\$ 3.20)
- 16 Oz. Copper Multiplier : Call for Pricing
- Aluminum Multiplier : (\$ 2.74)



PRICING MULTIPLIER EXAMPLE



**** All dimensions to include clearances for chasecover and holes**

Width: _____ Length: _____ Skirt : _____

A1: _____ A 2: _____ A Dia : _____

Collar Height: _____ Std. Collar EZ Collar

**** Standard Silicone Sealed Collars**

Drip Edge: Yes / No Crossbreak: Yes / No

$$42'' \left(\frac{\text{Length} + 2\text{Skirt}}{36 + 3 + 3} \right) + 30'' \left(\frac{\text{Width} + 2\text{Skirt}}{24 + 3 + 3} \right)$$

SOLUTION = 42 + 30 x Multiplier = \$ _____

Price: \$ _____

For chase covers larger than 42" wide and 96" long, call for additional pricing

For multiple holes add \$20 each
For EZ collars add \$35 Each

**** Options:**

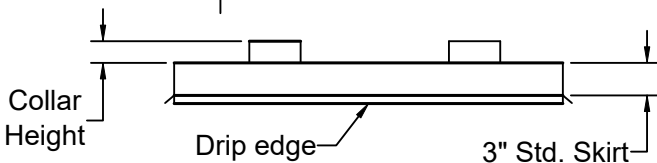
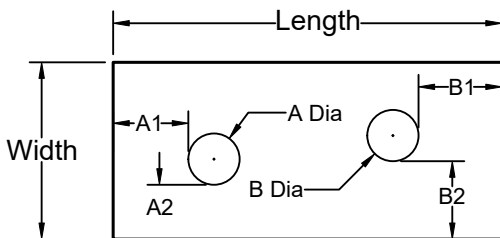
- * 3 or more holes.
- * Oval, square / Rectangular Holes. Add \$20 per Hole
- * Heavier Gauge Steel
- * Angle supports inside larger sized chase covers

POWDER COAT: YES NO

(Call for pricing)

Standard Colors

Flat Black, Satin Black, Bright white, Off White, Green, Brown, Brick Red, New Copper, Antique Copper, Bronze



Width: _____ Length: _____ Skirt : _____

A1: _____ A 2: _____ A Dia: _____

B1: _____ B2: _____ B Dia: _____

**** All dimensions to include clearances for chasecover and holes**

A Collar Height: _____ B Collar Height: _____

Std. Collar EZ Collar

**** Standard Silicone Sealed Collars**

Drip Edge: Yes / No Crossbreak: Yes / No

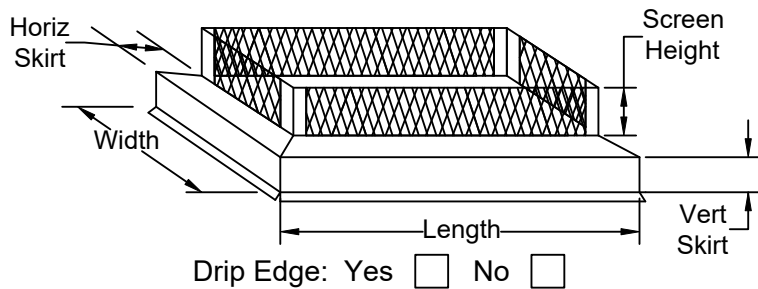


Phone: 800-897-8481

Fax: 800-628-9938

www.nationalchimney.com

Company: _____ PO: _____ Date: _____



ORDER # _____

STANDARD SCREEN HEIGHTS

Stainless: 8" 10" 12" 16"

Copper: 8" 10" 12"

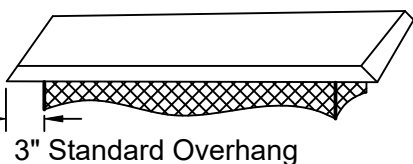
Other: _____ (ADD 5% TO HEIGHTS 17-24)
(HEIGHTS BEYOND 24" CALL FOR PRICE)

PRICING MULTIPLIER = Length + Width x Multiplier = Cost

Flat

FOR CAP SIZES UP TO 33" WIDE AND 67" IN LENGTH

- Stainless: Multiplier = (7.64)
- Copper: Call for Pricing



3" Standard Overhang

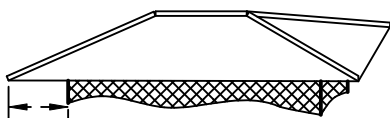
FOR CAP SIZES 34"- 49" WIDE OR LENGTHS 68"-100"

- Stainless: Multiplier = (9.56)
- Copper: Call for Pricing

Hip & Ridge

FOR CAP SIZES UP TO 45" WIDE AND 67" IN LENGTH

- Stainless: Multiplier = (9.40)
- Copper: Call for Pricing



4" Standard Overhang

Lid Pitch: ___/12 (Std. 5/12)
(ADD 10% FOR LID PITCH 6/12 TO 12/12)

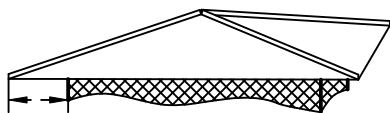
FOR CAP SIZES 46"- 65" WIDE OR LENGTHS 68"-100"

- Stainless: Multiplier = (11.75)
- Copper: Call for Pricing

Hip

FOR CAP SIZES UP TO 45" WIDE AND 67" IN LENGTH

- Stainless: Multiplier = (10.07)
- Copper: Call for Pricing



4" Standard Overhang

Lid Pitch: ___/12 (Std. 5/12)
(ADD 10% FOR LID PITCH 6/12 TO 12/12)

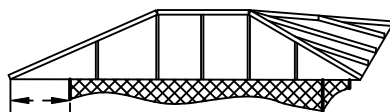
FOR CAP SIZES 46"- 65" WIDE OR LENGTHS 68"-100"

- Stainless: Multiplier = (12.59)
- Copper: Call for Pricing

Standing Seam

FOR CAP SIZES UP TO 45" WIDE AND 67" IN LENGTH

- Stainless: Multiplier = (12.50)
- Copper: Call for Pricing



4" Standard Overhang

Lid Pitch: ___/12 (Std. 5/12)
(ADD 10% FOR LID PITCH 6/12 TO 12/12)

FOR CAP SIZES 46"- 65" WIDE OR LENGTHS 68"-100"

- Stainless: Multiplier = (15.63)
- Copper: Call for Pricing

SIZING REQUIRMENTS

Length: _____ "

Width: _____ "

Vertical Skirt: _____ " (Std. 3")
(Skirts 5-8" add 5%)

Horizontal Skirt: _____ " (Std. 2")

Overhang: _____ "
(Add 10% for Extra Overhang upto 6")

CAP TOTAL \$ _____

POWDERCOAT COST \$ _____

TOTAL COST OF CAP \$ _____

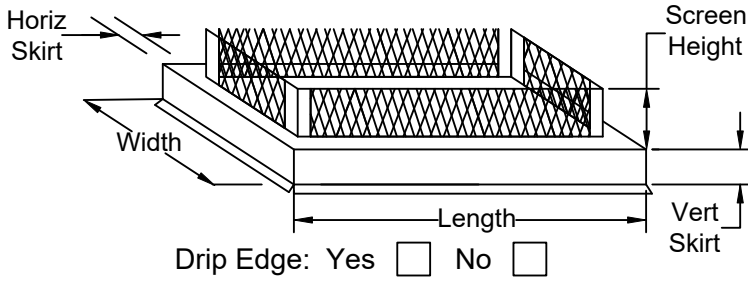
POWDER COAT

- FLAT BLACK
- SATIN BLACK
- PURE WHITE
- TRAFFIC WHITE
- BLACK / GREEN
- BROWN
- BRICK RED
- COPPER
- STATUTORY BRONZE
- ANTIQUE COPPER
- CUSTOM
- COLOR _____

CUSTOM COLORS WILL HAVE AN ADDITIONAL COST

Pricing As of 4/17/2023

Company: _____ PO: _____ Date: _____



ORDER # _____

STANDARD SCREEN HEIGHTS

Stainless: 8" 10" 12" 16"

Copper: 8" 10" 12"

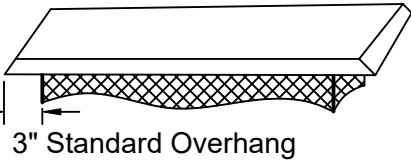
Other: _____ (ADD 5% TO HEIGHTS 17-24)
 (HEIGHTS BEYOND 24" CALL FOR PRICE)

PRICING MULTIPLIER = Length + Width x Multiplier = Cost

Flat

FOR CAP SIZES UP TO 33" WIDE AND 67" IN LENGTH

- Stainless: Multiplier = (6.47)
- Copper: Call for Pricing



3" Standard Overhang

FOR CAP SIZES 34"- 49" WIDE OR LENGTHS 68"-100"

- Stainless: Multiplier = (8.09)
- Copper: Call for Pricing

SIZING REQUIRMENTS

Length: _____ "

Width: _____ "

Vertical Skirt: _____ " (Std. 3")
 (Skirts 5-8" add 5%)

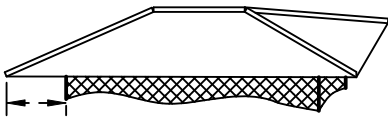
Horizontal Skirt: _____ " (Std. 2")

Overhang: _____ "
 (Add 10% for Extra Overhang upto 6")

Hip & Ridge

FOR CAP SIZES UP TO 45" WIDE AND 67" IN LENGTH

- Stainless: Multiplier = (9.03)
- Copper: Call for Pricing



4" Standard Overhang

FOR CAP SIZES 46"- 65" WIDE OR LENGTHS 68"-100"

- Stainless: Multiplier = (11.29)
- Copper: Call for Pricing

Lid Pitch: ____/12 (Std. 5/12)
 (ADD 10% FOR LID PITCH 6/12 TO 12/12)

CAP TOTAL \$ _____

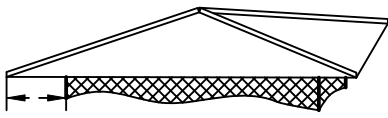
POWDERCOAT COST \$ _____

TOTAL COST OF CAP \$ _____

Hip

FOR CAP SIZES UP TO 45" WIDE AND 67" IN LENGTH

- Stainless: Multiplier = (9.39)
- Copper: Call for Pricing



4" Standard Overhang

FOR CAP SIZES 46"- 65" WIDE OR LENGTHS 68"-100"

- Stainless: Multiplier = (11.73)
- Copper: Call for Pricing

Lid Pitch: ____/12 (Std. 5/12)
 (ADD 10% FOR LID PITCH 6/12 TO 12/12)

POWDER COAT

- FLAT BLACK
- SATIN BLACK
- PURE WHITE
- TRAFFIC WHITE
- BLACK / GREEN
- BROWN
- BRICK RED
- COPPER
- STATUTORY BRONZE
- ANTIQUE COPPER
- CUSTOM

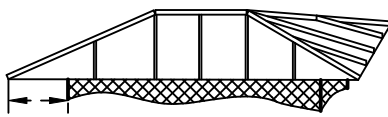
COLOR _____

CUSTOM COLORS WILL HAVE AN ADDITIONAL COST

Standing Seam

FOR CAP SIZES UP TO 45" WIDE AND 67" IN LENGTH

- Stainless: Multiplier = (12.17)
- Copper: Call for Pricing



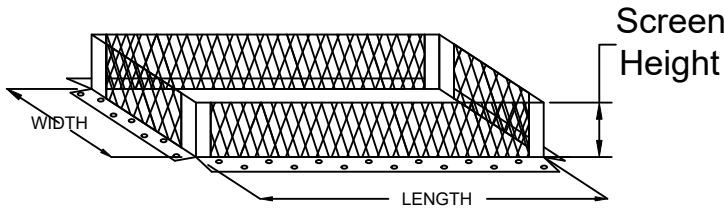
4" Standard Overhang

FOR CAP SIZES 46"- 65" WIDE OR LENGTHS 68"-100"

- Stainless: Multiplier = (15.21)
- Copper: Call for Pricing

Lid Pitch: ____/12 (Std. 5/12)
 (ADD 10% FOR LID PITCH 6/12 TO 12/12)

Company: _____ PO: _____ DATE: _____



ORDER # _____

STANDARD SCREEN HEIGHTS

Stainless: 8" 10" 12" 16"

Copper: 8" 10" 12"

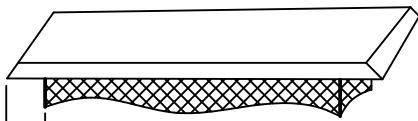
Other: _____ (ADD 5% TO HEIGHTS 17-24)
(HEIGHTS BEYOND 24" CALL FOR PRICE)

PRICING MULTIPLIER = Length + Width x Multiplier = Cost

Flat

FOR CAP SIZES UP TO 33" WIDE AND 67" IN LENGTH

- Stainless: Multiplier = (4.91)
- Copper: Call for Pricing



3" Standard Overhang

FOR CAP SIZES 34"- 49" WIDE OR LENGTHS 68"-100"

- Stainless: Multiplier = (6.14)
- Copper: Call for Pricing

* NO FRACTIONAL DIMENSIONS ON TOP MOUNT CAPS

SIZING REQUIRMENTS

Length: _____ "

Width: _____ "

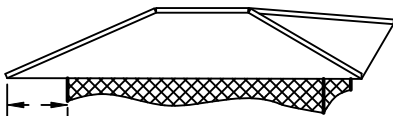
Overhang: _____ "

(ADD 10% FOR ADDITIONAL OVERHANG UP TO 6")

Hip & Ridge

FOR CAP SIZES UP TO 45" WIDE AND 67" IN LENGTH

- Stainless: Multiplier = (7.98)
- Copper: Call for Pricing



4" Standard Overhang

FOR CAP SIZES 46"- 65" WIDE OR LENGTHS 68"-100"

- Stainless: Multiplier = (9.98)
- Copper: Call for Pricing

Lid Pitch: ____/12 (Std. 5/12)
(ADD 10% FOR LID PITCH 6/12 TO 12/12)

CAP TOTAL \$ _____

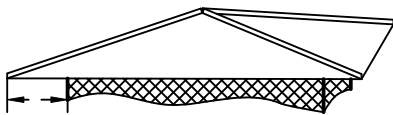
POWDERCOAT TOTAL \$ _____

TOTAL COST OF CAP \$ _____

Hip

FOR CAP SIZES UP TO 45" WIDE AND 67" IN LENGTH

- Stainless: Multiplier = (8.68)
- Copper: Call for Pricing



4" Standard Overhang

FOR CAP SIZES 46"- 65" WIDE OR LENGTHS 68"-100"

- Stainless: Multiplier = (10.85)
- Copper: Call for Pricing

Lid Pitch: ____/12 (Std. 5/12)
(ADD 10% FOR LID PITCH 6/12 TO 12/12)

POWDER COAT

- FLAT BLACK
- SATIN BLACK
- PURE WHITE
- TRAFFIC WHITE
- BLACK / GREEN
- BROWN
- BRICK RED
- COPPER
- STATUTORY BRONZE
- ANTIQUE COPPER
- CUSTOM

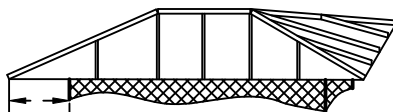
COLOR _____

CUSTOM COLORS WILL HAVE AN ADDITIONAL COST

Standing Seam

FOR CAP SIZES UP TO 45" WIDE AND 67" IN LENGTH

- Stainless: Multiplier = (8.70)
- Copper: Call for Pricing



4" Standard Overhang

FOR CAP SIZES 46"- 65" WIDE OR LENGTHS 68"-100"

- Stainless: Multiplier = (10.88)
- Copper: Call for Pricing

Lid Pitch: ____/12 (Std. 5/12)
(ADD 10% FOR LID PITCH 6/12 TO 12/12)