

Chase Cover Specification Pricing Worksheet

Effective as of
5/1/2026

Company: _____ PO: _____

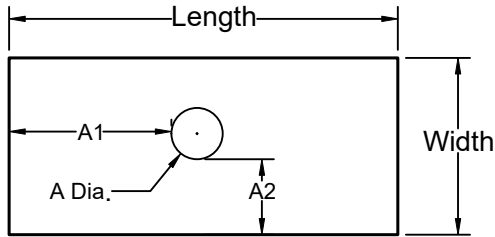
DATE: _____

Customer Name: _____

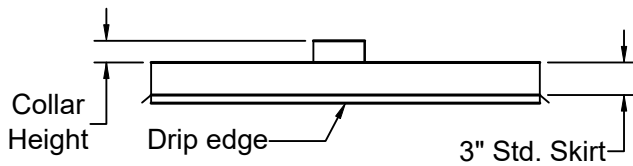
Order # _____

No Hole Single Hole Centered

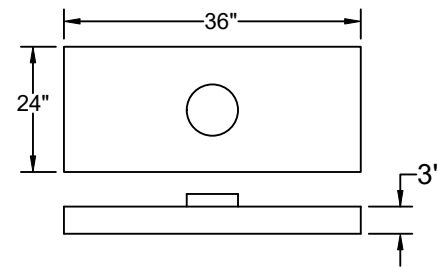
MATERIAL:



- 24 Ga. Stainless Multiplier : (\$ 3.39)
- 16 Oz. Copper Multiplier : Call for Pricing
- Aluminum Multiplier : (\$ 3.07)



PRICING MULTIPLIER EXAMPLE



**** All dimensions to include clearances for chasecover and holes**

Width: _____ Length: _____ Skirt : _____

A1: _____ A 2: _____ A Dia : _____

Collar Height: _____ Std.Collar EZCollar

**** Standard Silicone Sealed Collars**

Drip Edge: Yes No Crossbreak: Yes No

$$42'' \frac{(\text{Length} + 2\text{Skirt})}{(36 + 3 + 3)} + 30'' \frac{(\text{Width} + 2\text{Skirt})}{(24 + 3 + 3)}$$

SOLUTION = 42 + 30 x Multiplier = \$ _____

Price: \$ _____

For chase covers larger than 42" wide and 96" long, call for additional pricing

For multiple holes add \$20 each
For EZ collars add \$35 Each

**** Options:**

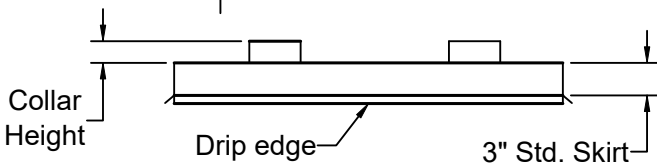
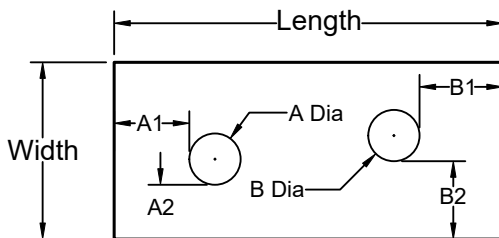
- * 3 or more holes.
- * Oval, square / Rectangular Holes. Add \$20 per Hole
- * Heavier Gauge Steel
- * Angle supports inside larger sized chase covers

POWDER COAT: YES NO

(Call for pricing)

Standard Colors

Flat Black, Satin Black, Bright white, Off White, Green, Brown, Brick Red, New Copper, Antique Copper, Bronze



Width: _____ Length: _____ Skirt : _____

A1: _____ A 2: _____ A Dia: _____

B1: _____ B2: _____ B Dia: _____

**** All dimensions to include clearances for chasecover and holes**

A Collar Height: _____ B Collar Height: _____

Std. Collar EZ Collar

**** Standard Silicone Sealed Collars**

Drip Edge: Yes No Crossbreak: Yes No



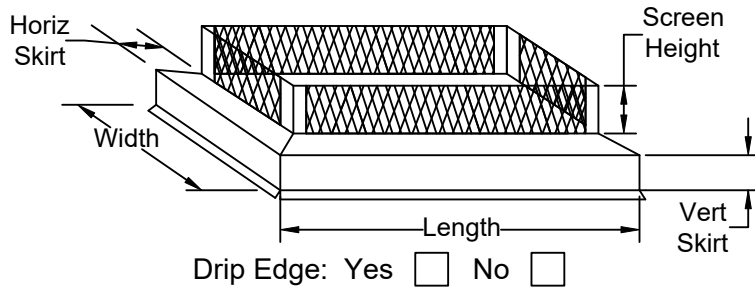
Phone: 800-897-8481

Fax: 800-628-9938

www.nationalchimney.com

PITCHED SKIRT STYLE MULTI-FLUE CHIMNEY CAP

Company: _____ PO: _____ Date: _____



ORDER # _____

STANDARD SCREEN HEIGHTS

Stainless: 8" 10" 12" 16"

Copper: 8" 10" 12"

Other: _____ (ADD 5% TO HEIGHTS 17-24)
(HEIGHTS BEYOND 24" CALL FOR PRICE)

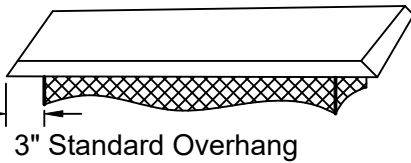
PRICING MULTIPLIER = Length + Width x Multiplier = Cost

Flat

FOR CAP SIZES UP TO 33" WIDE AND 67" IN LENGTH

Stainless: Multiplier = (8.10)

Copper: Call for Pricing



3" Standard Overhang

FOR CAP SIZES 34" - 49" WIDE OR LENGTHS 68" - 100"

Stainless: Multiplier = (10.12)

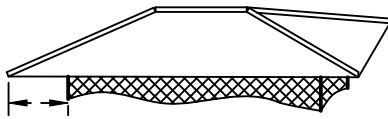
Copper: Call for Pricing

Hip & Ridge

FOR CAP SIZES UP TO 45" WIDE AND 67" IN LENGTH

Stainless: Multiplier = (9.96)

Copper: Call for Pricing



4" Standard Overhang

FOR CAP SIZES 46" - 65" WIDE OR LENGTHS 68" - 100"

Stainless: Multiplier = (12.46)

Copper: Call for Pricing

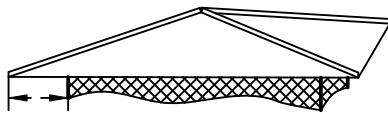
Lid Pitch: ___/12 (Std. 5/12)
(ADD 10% FOR LID PITCH 6/12 TO 12/12)

Hip

FOR CAP SIZES UP TO 45" WIDE AND 67" IN LENGTH

Stainless: Multiplier = (10.67)

Copper: Call for Pricing



4" Standard Overhang

FOR CAP SIZES 46" - 65" WIDE OR LENGTHS 68" - 100"

Stainless: Multiplier = (13.34)

Copper: Call for Pricing

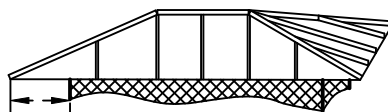
Lid Pitch: ___/12 (Std. 5/12)
(ADD 10% FOR LID PITCH 6/12 TO 12/12)

Standing Seam

FOR CAP SIZES UP TO 45" WIDE AND 67" IN LENGTH

Stainless: Multiplier = (13.25)

Copper: Call for Pricing



4" Standard Overhang

FOR CAP SIZES 46" - 65" WIDE OR LENGTHS 68" - 100"

Stainless: Multiplier = (16.56)

Copper: Call for Pricing

Lid Pitch: ___/12 (Std. 5/12)
(ADD 10% FOR LID PITCH 6/12 TO 12/12)

SIZING REQUIRMENTS

Length: _____ "

Width: _____ "

Vertical Skirt: _____ " (Std. 3")
(Skirts 5-8" add 5%)

Horizontal Skirt: _____ " (Std. 2")

Overhang: _____ "
(Add 10% for Extra Overhang upto 6")

CAP TOTAL \$ _____

POWDERCOAT COST \$ _____

TOTAL COST OF CAP \$ _____

POWDER COAT

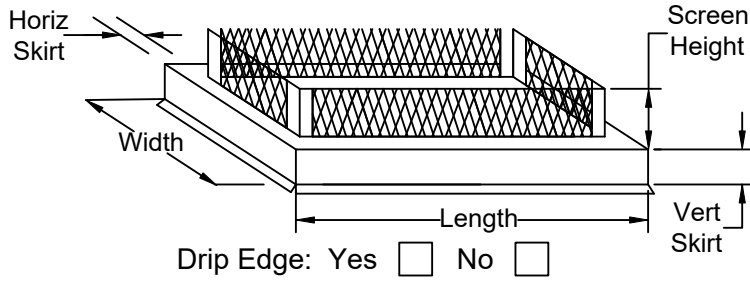
- FLAT BLACK
- SATIN BLACK
- PURE WHITE
- TRAFFIC WHITE
- BLACK / GREEN
- BROWN
- BRICK RED
- COPPER
- STATUTORY BRONZE
- ANTIQUE COPPER
- CUSTOM

COLOR _____

CUSTOM COLORS WILL HAVE
AN ADDITIONAL COST

SKIRT STYLE MULTI-FLUE CHIMNEY CAP

Company: _____ PO: _____ Date: _____



ORDER # _____

STANDARD SCREEN HEIGHTS

Stainless: 8" 10" 12" 16"

Copper: 8" 10" 12"

Other: _____ (ADD 5% TO HEIGHTS 17-24)
(HEIGHTS BEYOND 24" CALL FOR PRICE)

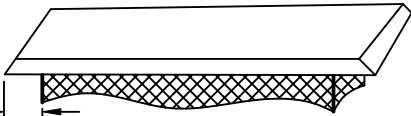
PRICING MULTIPLIER = Length + Width x Multiplier = Cost

Flat

FOR CAP SIZES UP TO 33" WIDE AND 67" IN LENGTH

Stainless: Multiplier = (6.86)

Copper: Call for Pricing



3" Standard Overhang

FOR CAP SIZES 34" - 49" WIDE OR LENGTHS 68"-100"

Stainless: Multiplier = (8.58)

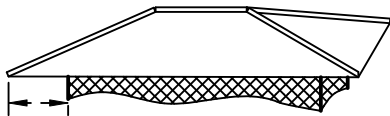
Copper: Call for Pricing

Hip & Ridge

FOR CAP SIZES UP TO 45" WIDE AND 67" IN LENGTH

Stainless: Multiplier = (9.57)

Copper: Call for Pricing



4" Standard Overhang

FOR CAP SIZES 46" - 65" WIDE OR LENGTHS 68"-100"

Stainless: Multiplier = (11.96)

Copper: Call for Pricing

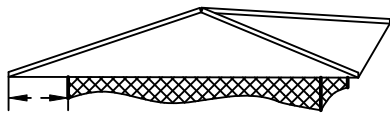
Lid Pitch: ___/12 (Std. 5/12)
(ADD 10% FOR LID PITCH 6/12 TO 12/12)

Hip

FOR CAP SIZES UP TO 45" WIDE AND 67" IN LENGTH

Stainless: Multiplier = (9.95)

Copper: Call for Pricing



4" Standard Overhang

FOR CAP SIZES 46" - 65" WIDE OR LENGTHS 68"-100"

Stainless: Multiplier = (12.44)

Copper: Call for Pricing

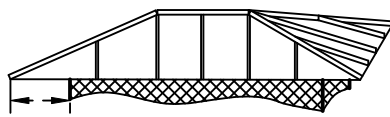
Lid Pitch: ___/12 (Std. 5/12)
(ADD 10% FOR LID PITCH 6/12 TO 12/12)

Standing Seam

FOR CAP SIZES UP TO 45" WIDE AND 67" IN LENGTH

Stainless: Multiplier = (12.90)

Copper: Call for Pricing



4" Standard Overhang

FOR CAP SIZES 46" - 65" WIDE OR LENGTHS 68"-100"

Stainless: Multiplier = (16.13)

Copper: Call for Pricing

Lid Pitch: ___/12 (Std. 5/12)
(ADD 10% FOR LID PITCH 6/12 TO 12/12)

SIZING REQUIRMENTS

Length: _____ "

Width: _____ "

Vertical Skirt: _____ " (Std. 3")
(Skirts 5-8" add 5%)

Horizontal Skirt: _____ " (Std. 2")

Overhang: _____ "
(Add 10% for Extra Overhang upto 6")

CAP TOTAL \$ _____

POWDERCOAT COST \$ _____

TOTAL COST OF CAP \$ _____

POWDER COAT

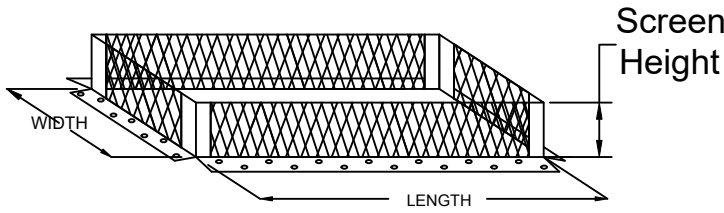
- | | |
|---|---|
| <input type="checkbox"/> FLAT BLACK | <input type="checkbox"/> SATIN BLACK |
| <input type="checkbox"/> PURE WHITE | <input type="checkbox"/> TRAFFIC WHITE |
| <input type="checkbox"/> BLACK / GREEN | <input type="checkbox"/> BROWN |
| <input type="checkbox"/> BRICK RED | <input type="checkbox"/> COPPER |
| <input type="checkbox"/> STATUTORY BRONZE | <input type="checkbox"/> ANTIQUE COPPER |
| | <input type="checkbox"/> CUSTOM |

COLOR _____

CUSTOM COLORS WILL HAVE
AN ADDITIONAL COST

TOP MOUNT MULTI-FLUE CHIMNEY CAP

Company: _____ PO: _____ DATE: _____



ORDER # _____

STANDARD SCREEN HEIGHTS

Stainless: 8" 10" 12" 16"

Copper: 8" 10" 12"

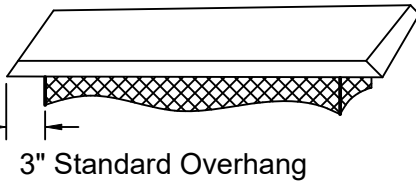
Other: _____ (ADD 5% TO HEIGHTS 17-24)
(HEIGHTS BEYOND 24" CALL FOR PRICE)

Flat Pricing

(Length + Width + Height) x Multiplier = Cost

FOR TOTAL LENGTH + WIDTH + HEIGHT

- Stainless Multiplier:
0 - 60" = 3.71
61" - 70" = 3.98
71" - 100" = 4.24
101"+ = Call for Pricing
- Copper: Call for Pricing



Hip & Ridge

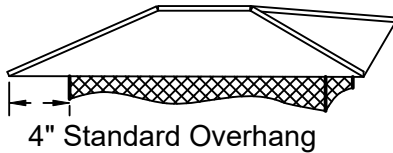
(Length + Width) x Multiplier = Cost

FOR CAP SIZES UP TO 45" WIDE AND 67" IN LENGTH

- Stainless: Multiplier = (8.46)
 Copper: Call for Pricing

FOR CAP SIZES 46" - 65" WIDE OR LENGTHS 68"-100"

- Stainless: Multiplier = (10.58)
 Copper: Call for Pricing



Lid Pitch: ____/12 (Std. 5/12)
(ADD 10% FOR LID PITCH 6/12 TO 12/12)

Hip

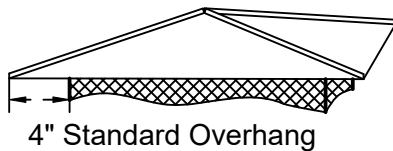
(Length + Width) x Multiplier = Cost

FOR CAP SIZES UP TO 45" WIDE AND 67" IN LENGTH

- Stainless: Multiplier = (9.20)
 Copper: Call for Pricing

FOR CAP SIZES 46" - 65" WIDE OR LENGTHS 68"-100"

- Stainless: Multiplier = (11.50)
 Copper: Call for Pricing



Lid Pitch: ____/12 (Std. 5/12)
(ADD 10% FOR LID PITCH 6/12 TO 12/12)

Standing Seam

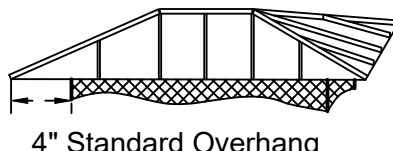
(Length + Width) x Multiplier = Cost

FOR CAP SIZES UP TO 45" WIDE AND 67" IN LENGTH

- Stainless: Multiplier = (9.22)
 Copper: Call for Pricing

FOR CAP SIZES 46" - 65" WIDE OR LENGTHS 68"-100"

- Stainless: Multiplier = (11.53)
 Copper: Call for Pricing



Lid Pitch: ____/12 (Std. 5/12)
(ADD 10% FOR LID PITCH 6/12 TO 12/12)

* NO FRACTIONAL DIMENSIONS ON TOP MOUNT CAPS

SIZING REQUIRMENTS

Length: _____ "

Width: _____ "

Overhang: _____ "

(ADD 10% FOR ADDITIONAL OVERHANG UP TO 6")

CAP TOTAL \$ _____

POWDERCOAT TOTAL \$ _____

TOTAL COST OF CAP \$ _____

POWDER COAT

- | | |
|---|---|
| <input type="checkbox"/> FLAT BLACK | <input type="checkbox"/> SATIN BLACK |
| <input type="checkbox"/> PURE WHITE | <input type="checkbox"/> TRAFFIC WHITE |
| <input type="checkbox"/> BLACK / GREEN | <input type="checkbox"/> BROWN |
| <input type="checkbox"/> BRICK RED | <input type="checkbox"/> COPPER |
| <input type="checkbox"/> STATUTORY BRONZE | <input type="checkbox"/> ANTIQUE COPPER |
| <input type="checkbox"/> CUSTOM | |
| <input type="checkbox"/> COLOR _____ | |

CUSTOM COLORS WILL HAVE AN ADDITIONAL COST